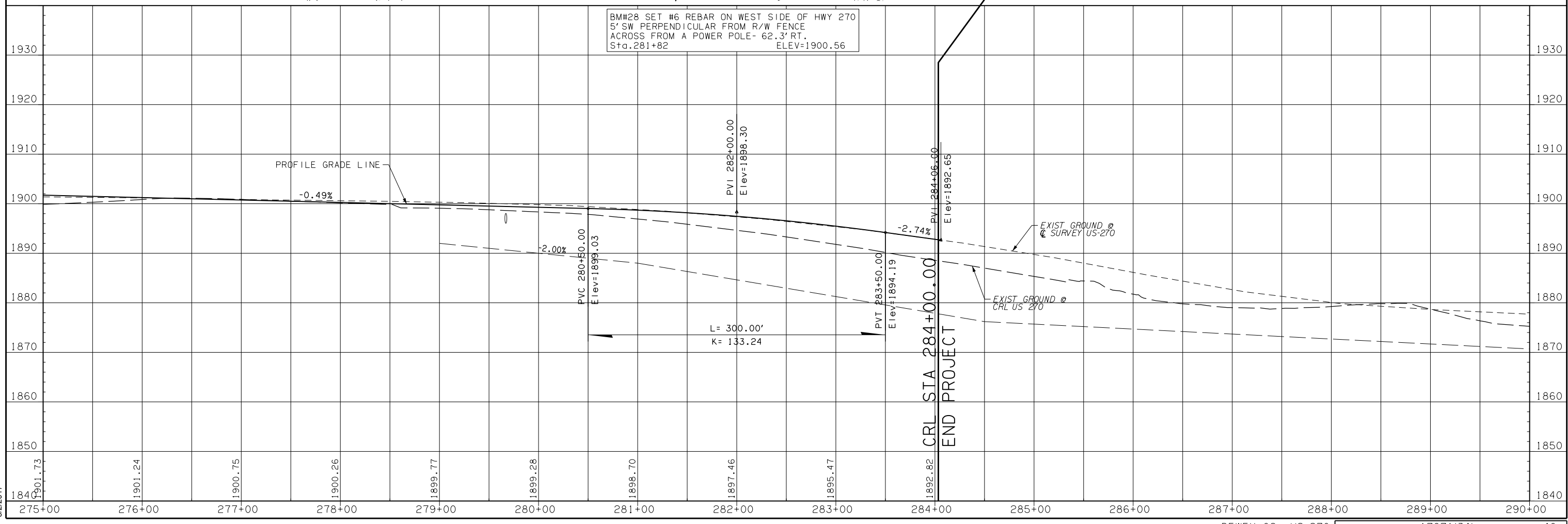


SEC. 9 T-18-N, R-15-W

BM#28 SET #6 REBAR ON WEST SIDE OF HWY 270
 5' SW PERPENDICULAR FROM R/W FENCE
 ACROSS FROM A POWER POLE- 62.3' RT.
 Sta. 281+82 ELEV=1900.56



8/2/2017